



quality. speed. innovation.

PRODUCT CATALOG *SPRING 2022*

BROADBAND

DATACOM



TRUSTED
SINCE
04



CONTENTS

DATACOM

- 3** *Optimus High Density Patch Panels*
- 4** *HDA Patch System: Panels, Cassettes, Adapter Plates*
- 5** *Fiber Trunks*
- 6** *Fiber Optic Cables*
- 7** *Copper Patch Panels, Keystone Jacks, Patch Cables*
- 8** *DAC & AOC Cables*
- 9** *Data Center Transceivers, Power Cables*
- 10** *Locking Power Cables, Input Cables, Cabinets, Racks & Accessories*
- 11** *Cable Management, Media Converters*

BROADBAND

- 12-13** *BladeHD™ System: Splitter Cabinets, Splitters, Panels, Cassettes*
- 14** *Drop Cables*
- 15** *Fiber Entry Terminals*
- 17** *Fiber Optic PLC Splitters, FBT Splitters*
- 18-19** *Fiber Optic Enclosures*
- 20** *Fiber Patch Panel Frames, Cassettes, Splice Trays & Accessories*
- 21** *GPON & WDM Transceivers, Adapter Plates*
- 22** *Fiber Test Equipment, Loopbacks, Attenuators, Fiber Cleaners*
- 23** *Fiber Pigtails, Copper Premise Accessories*

OPTIMUS MAX™ FIBER PANELS

OPTIMIZED

Configurations available for Base-8, 12, 16, and 24 infrastructure

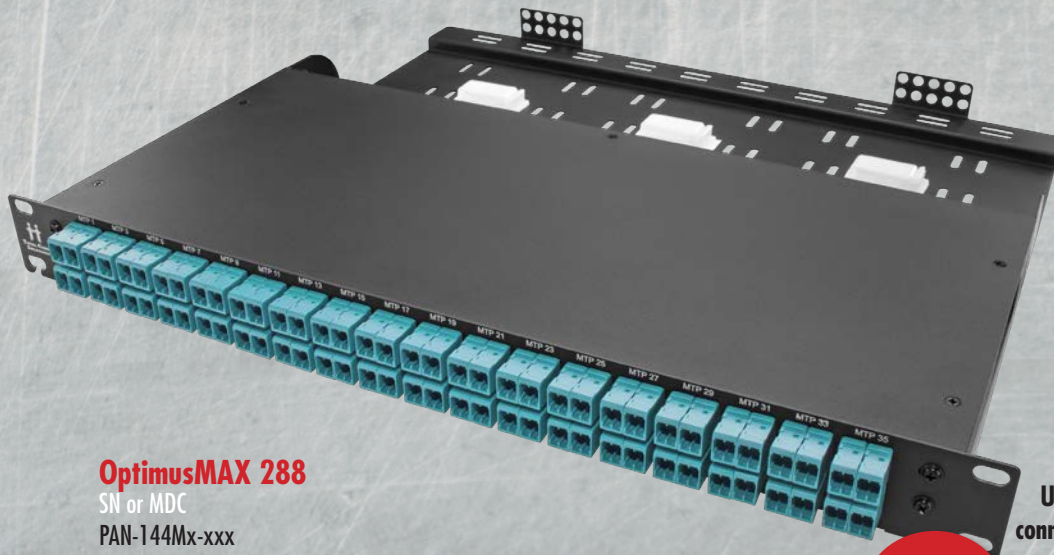
PORT LABELING

Easy to read port identification on front and back

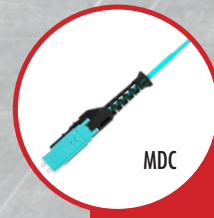
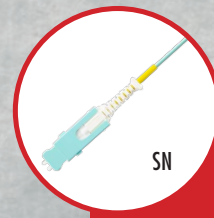
CABLE MANAGEMENT

Side and rear cable management available

FEATURE



OptimusMAX 288
SN or MDC
PAN-144Mx-xxx



Use SN-LC or MDC-LC patch cords to connect to existing data center equipment

3X

FIBER DENSITY!!!

VS Standard LC Duplex Connector



OptimusMAX 216
PAN-108ML-xxx



OptimusMAX 192
PANV-96ML-xxx



OptimusMAX 144
Available Flat or Angled
PANx-72ML-xxx



OptimusMAX Rear Cable Manager
PAN-CBL-MGR-SHELF

OPTIMUS™ TRANSFORMING FIBER PANEL

HIGHLY ADAPTIVE

Provides a wide variety of configurations for your patching needs

COST EFFECTIVE

Simple rackmount design eliminates the need for individual cassettes

HYPERSCALE READY

Scalable solution for port breakout, replication or pass through



Optimus 96
PAN-48ML-xxx



Optimus 72
PAN-36ML-xxx



Optimus 48
PAN-24ML-xxx

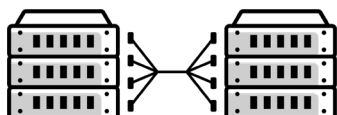


Optimus QSFP 96
QSFP to SFP Distribution Panel
QSFP-DPAN-48ML-xxx

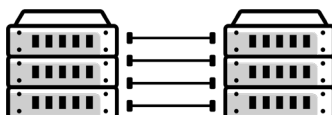


Optimus QSFP 64
QSFP to SFP Distribution Panel
QSFP-DPAN-32ML-xxx

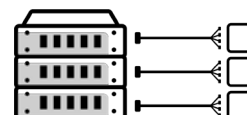
Optimized for Your Application!



Structured Cabling



Port Replication



Distribution

PANEL OPTIONS



1U HDA Full Enclosure
FPP-HDA-1U



1U HDA Bulkhead with Rear Cable Manager
FPP-04H-R1-14-S



1U HDA Bulkhead
FPP-04H-R1-14

CASSETTES



HDA MTP® Cassettes
SM and OM4 Available
FPP-CS-PM2Lx2-xxx-24-HDA



HDA Base-8 Cassettes
SM and OM4 Available
FPP-CS-PM3Lx2-xxx-24-HDA

ADAPTER PLATES



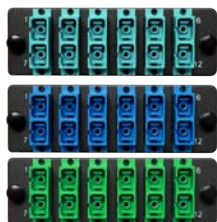
HDA MTP® Adapter Plate
FPP-AD-Mx2-06-A



HDA LC Adapter Plate
12, 16, or 24 Fiber
FPP-AD-LxQS-06-A
Available with internal shutters



HDA LC EZ-Access Adapter Plate
FPP-AD-LxQS-06H-A
Available with internal shutters



HDA SC Adapter Plate
FPP-AD-Sx2-06-A



4 Keystone Plate
FPP-AD-4BK-04-A
6 Keystone Plate
FPP-AD-6BK-06-A
Pass-thru ONLY



HDA Blank Plate
HDA-BLANK

END-TO-END DATA CENTER PATCHING SOLUTIONS

Patch Panels



Trunks



Patch Cords

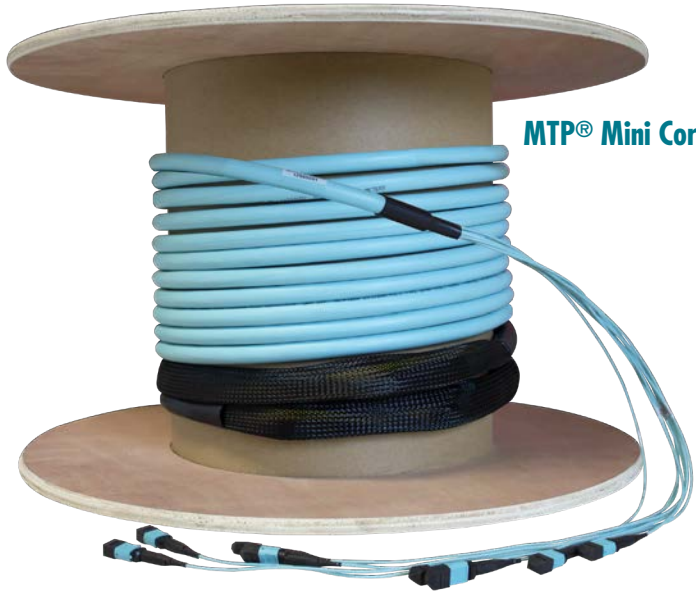


Structured Cabling System



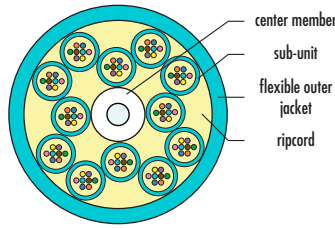
Organize and protect your fiber or copper backbone with an end-to-end LYNN data center structured cabling system backed by our 25-year System Warranty

FIBER TRUNKS

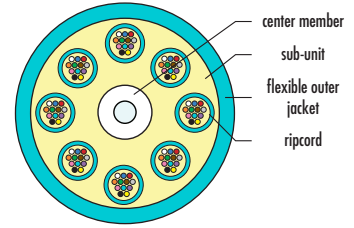


MTP® Mini Core Trunks

BASE-8



BASE-12



- Optimized for 2 and 8-fiber transceiver technologies
- 100% fiber utilization for 8-fiber transceiver systems
- High connector fiber density
- Larger number of fibers installed quickly
- Custom-made for plug and play connection into fiber patch panels or cassettes
- Constructed with Corning® Bend Insensitive fiber and best-in-class connectors
- Delivered spooled (standard if >100') to reduce kinks during installation
- Optional pulling eye to protect connectors during installation
- Available pre-terminated or as a pigtail for site termination
- Pre-terminated with MTP® Elite, MPO, LC, SC or ST



BIF
BEND INSENSITIVE FIBER

TCS Slim Trunk
(SMF or MM)



BIF
BEND INSENSITIVE FIBER

Universal LC Elite™ Trunks
(SMF or MM)



BIF
BEND INSENSITIVE FIBER

Armored Trunks
(SMF or MM)



BIF
BEND INSENSITIVE FIBER

Indoor/Outdoor Trunks
(Available sizes: 2, 6, 12, 24, 48, 72, 96 & 144 fiber)

Introducing BRIGHT

One of the world's first self-powered traceable fiber jumpers. Each end contains an LED and a button to activate, once activated your Bright jumper will light up at each connector end for easy traceability. Every Bright fiber jumper utilizes a switchable Uniboot connector and Corning ClearCurve glass.

FEATURE



KEY FEATURES:

- * Self tracing saves **time** and **money**
- * Blinking lights provide **RAPID** resolution for wiring mistakes
- * Quick release battery compartment for **easy field replacement**
- * 3v lithium battery has **8+ YEAR SHELF LIFE**
- * **PATENTED TECHNOLOGY**
- * Efficient ID for **maximizing** labeling process
- * Reverse polarity Uniboot
- * Tracing **AUTOMATICALLY** shuts off at 20 seconds or 40 seconds
- * Product can be activated on **either end**
- * Utilizes Corning ClearCurve® Glass
- * UL Rated CMR-OF

AVAILABILITY:

- * 1-15 meter cord standard lengths in stock
- * **Custom lengths upon request**
- * Average lead time for custom orders: 1- 2 Weeks*

FIBER OPTIC CABLES

FEATURE | U ELITE™



Universal LC Elite™
 (MM OM3, OM4, OM5, SM)
 OM4= ULE-4PA2A-xxxM
 OM5= ULE-5PL2L-xxxM
 SM= ULE-SPY2B-xxxM

Toolless Reversible Polarity
 Never exposes fiber, eliminating risk of breakage

Color Coding System
 10 colors to help with easy cable identification

Hyperscale Ready
 Designed for extreme density situations

COLOR CODED TRIGGER SYSTEM



LC to LC Duplex Zipcord
 D-Lx2Lx2-xx2-xxxM
 Available MM: OM4, OM3, OM1
 SMF: APC, UPC or APC/UPC



LC to SC Duplex Zipcord
 D-L2S2-4P2-xxxM
 Available MM: OM4, OM3, OM1
 SMF: APC, UPC or APC/UPC



SC to SC Duplex Zipcord
 D-5x2Sx2-xx2-xxxM
 Available MM: OM4, OM3, OM1
 SMF: APC, UPC or APC/UPC



LC to ST Duplex Zipcord
 D-L2T-1R3-xxxM
 Available MM: OM1
 SMF: APC, UPC or APC/UPC



ST to ST Duplex Zipcord
 D-TUTU-SR3-xxxM
 SMF, UPC



MTP Elite® 12-Fiber
 MPO-PFPF-xR3-xxxM
 OM4, OM4+, OM5, SMF



MTP Elite® 16-Fiber
 QSFPDD-PFPF-xR3-xxxM
 OM4, OM4+, OM5, SMF



MTP Elite® 24-Fiber
 M24-PFPF-xR3-xxxM
 OM4, OM4+, OM5, SMF



MTP® to LC Harness Cable
 (OM4 40G to 10G)
 M24-PF3PF-4P31-xxxM



MDC Uniboot Cable
 MM: OM4
 MDC-xxx-4PA2A-xxxM
 Available: MDC-MDC, MDC-LC



SN™ Uniboot Cable
 U-SNSN-4RY-xxxM
 MM: OM4
 Available: SN-SN, SN-LC



CS™ Uniboot Cable
 U-CSCS-4RY-xxxM
 MM: OM
 Available: CS-CS, CS-LC



Choice Uniboot Cable
 UBT-4R2-xxxM
 MM: OM4



SC Simplex Adapter
 (1-Piece Mold)
 TCS-SCSZRF-BL/GN
 TCS-SCSPBF-AQ/BE



SC Duplex Adapter
 (1-Piece Mold)
 TCS-SCDZRF-BL/GN
 TCS-SCDPBF-AQ/BE



LC Duplex Adapter
 (1-Piece Mold)
 TCS-LCDZRF-BL/GN
 TCS-LCDPBF-AQ/BE



LC Quad Adapter
 (1-Piece Mold)
 TCS-LCQZRF-BL/GN
 TCS-LCQPBF-AQ/BE

FEATURE | MTP PRO®



MTP PRO®
 (MM OM3, OM4, OM5)

- Enhanced Performance**
Mating durability for long life
- Backwards Compatible**
Fully compatible with MTP® Elite and MPO connections
- Push-Pull Sleeve**
Push-pull insertion and extraction housing design for ease of use



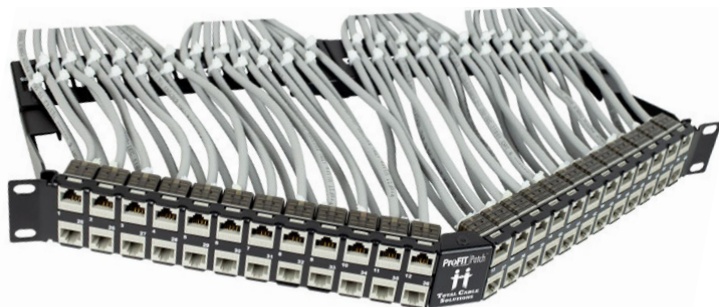
Multimode: Aqua with & without pins
 Singlemode: Yellow with & without pins

MTP PRO® Tool
 PRO-TOOL-18814

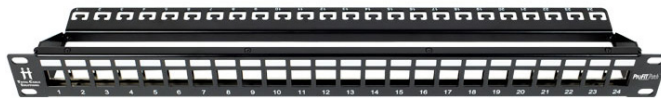
- Reversible Polarity**
Make polarity changes in the field without exposing fibers (A to B, B to A)
- Easy Pin Changes**
Add or remove alignment pins with ease without removing the housing (Male to Female, Female to Male)

COPPER PATCH PANELS

ProFIT Patch™
Premium Copper Panels



ProFIT™ 48 Port Angled
(Keystone Panel)
PRO-CPP-BLANK-1U-48V



ProFIT™ 24 Port
(Keystone Panel)
PRO-CPP-BLANK-1U-24



ProFIT™ 48 Port
(Keystone Panel)
PRO-CPP-BLANK-1U-48



ProFIT™ 12 Port Premise Panel
(110 Block, Punch-down)
PRO-CPP-12-CAT5E-WALL
PRO-CPP-12-CAT6-WALL



ProFIT™ 24 Port Premise Panel
(110 Block, Punch-down)
PRO-CPP-24-CAT5E-19
PRO-CPP-24-CAT6-19



ProFIT™ 48 Port Premise Panel
(110 Block, Punch-down)
PRO-CPP-48-CAT5E-19
PRO-CPP-48-CAT6-19

FEATURE | ProFIT™ KEYSTONE JACKS



ProFIT™ Cat.6a
(Keystone Jack)
PRO-KEY-AP-x-25



ProFIT™ Cat.6
(Keystone Jack)
PRO-KEY-6P-x-25



ProFIT™ Cat.5e
(Keystone Jack)
PRO-KEY-5P-x-25

AVAILABLE COLORS:



Component-Level Performance

Standard Industry Size

Rapid Installation

Backwards Compatible

ProFIT™
PREMIUM COPPER PRODUCTS

For maximum signal integrity

Fits in standard-size keystone panels, faceplates, and surface mount boxes

Reduces termination speed almost 90% using ProFIT Rapid Termination tool

Interoperable and backwards compatible with CAT5 and CAT3

PREMISE CABLING - NETWORK CABLES

ProFIT Ultra™
Premium Copper Cables



ProFIT™ Ultra
(24/26 AWG Cat.6/Cat.6a)



ProFIT Ultra Slim™
Premium Copper Cables



ProFIT™ Ultra Slim
(28 AWG Cat.6/Cat.6a)



TCS Choice Slim™



TCS Choice Slim
(28AWG Cat.6/Cat.6a)



TCS Choice Copper™



TCS Choice Copper
(Cat.5e/Cat.6/Cat.6a)



FEATURE | COPPER TERMINATION TOOLS

FASTPASS RJ45™

On-site Termination KIT

Fast & Easy Assembly



FULL KIT
PRO-FA-KIT

- 25 x FASTPASS RJ45 Cat6 Connectors
- 25 x FASTPASS RJ45 Cat5e Connectors
- 50 x FASTPASS RJ45 Strain Reliefs
- 1 x FASTPASS RJ45 Stripper
- 1 x FASTPASS RJ45 Tool



FastPass RJ45 Connectors & Strain Reliefs
 PRO-FA-5-100 (Cat5e)
 PRO-FA-6-100 (Cat6)
 PRO-FA-B-100 (Strain Reliefs/Boots)



FastPass RJ45 Tool
 (Also sold separately)
 PRO-FA-TOOL



FastPass RJ45 Stripper
 (Also sold separately)
 PRO-FA-ST

ProFIT™ RAPID TERMINATION TOOL



PRO-KEY-TOOL
 PRO-KEY-DIE

SAVE TIME

Faster on-site RJ45 jack terminations

ONE-AND-DONE

Punch down all 8 conductors and cut excess wire--all in one squeeze!

PROTECT YOUR INVESTMENT

Replaceable cutting blades for less waste (Sold Separately)

PROTECT YOUR INVESTMENT

Designed for TCS ProFIT Jacks

DIRECT ATTACH & ACTIVE OPTICAL CABLES

DAC and AOC cables by Total Cable Solutions are available in custom sizes and colors. Many lengths and form factors in stock for fast shipping. Custom lengths, colors etc. generally ship within 10 days.



SFP+ Direct Attach Cable (DAC)
 (10G SFP)
 SFP-10G-SFP-xxxM



SFP28 DAC
 (25G)
 SFP28-25G-SFP28-xxM



QSFP+ to 4xSFP DAC
 (40G to 4x10G)
 QSFP-40G-4SFP-xxM



QSFP+ DAC
 (40G QSFP)
 QSFP-40G-QSFP-xxM



QSFP28 DAC
 (100G)
 QSFP28-100G-QSFP28-xxM



QSFP+ AOC Cable
 (40G)
 AOC-QSFP-40G-xxxM



QSFP28 AOC Cable
 (100G)
 AOC-QSFP28-100G-xxxM

FIBER OPTIC TRANSCEIVERS FOR DATA CENTERS

1G



SFP
SR/LR
Copper

10G



SFP+
SR/LR
Copper

25G



SFP28
SR/LR
BiDi

40G



QSFP+
SR/LR
BiDi

100G



QSFP28
SR/LR
BiDi

200/
400G



QSFP56/QSFP-DD
SR/LR

SUPPORT AVAILABLE FOR ALL MAJOR BRAND SWITCHES, SERVERS AND STORAGE

SureFIT Locking Sleeves

SUREFIT™
LOCKING SLEEVE



Easily slides onto existing standard (non-locking) power cords to provide a more "snug" fit into PDU outlets, reducing the chance of power interruptions



SureFIT™ Locking Sleeve
SUREFIT-C1x-xx
Available for C13, C14, C19 & C20

POWER CABLES

Data center grade ultra-flexible power cords in vibrant colors to identify critical devices. Pure copper conductor core for maximum pliability. 1 ft to 15 ft lengths available. UL Listed and RoHS compliant.



C14 to C13 (10 Amp)
PWR-34VL-12xx-yyyF



C14 to C15/C13 (15 Amp)
PWR-54JL-52xx-yyyF



C20 to C19 (20 Amp)
PWR-90JL-02xx-yyyF



NEMA 5-15P to C13 (10 Amp)
PWR-3PVL-11xx-yyyF



5-15P to C14 Adapter
PWR-C14-515R



C14 to C19 (15 Amp)
PWR-94JL-52xx-yyyF



C20 to C13 (15 Amp)
PWR-30JL-52xx-yyyF



C20 to C21 (20 Amp)
PWR-10JL-02xx-yyyF

LOCKING POWER CABLES



C14 to C13
(10 Amp)

PWR-3FVL-12xxx-yyyF



C14 to C15
(15 Amp)

PWR-5FJL-52xx-yyyF



C14 to C19
(20 Amp)

PWR-9TJL-02xx-yyyF



C20 to C13
(15 Amp)

PWR-3TJL-52xx-yyyF



C20 to C19
(20 Amp)

PWR-9TJL-02xx-yyyF

INPUT CABLES



Nema L5-20P to C19
(20 Amp)

PWR-9DJL-02BK-00xF



Nema L6-20P to C19
(20 Amp)

PWR-9QJL-02BK-00xF



NEMAA L6-20P to C13
(15 Amp)

PWR-3QJL-52BK-00xF



Nema L6-20P to C15
(15 Amp)

PWR-5QJL-52BK-00xF

CABINETS, RACKS & ACCESSORIES

Designed for hyperscale data centers and constructed of industry grade steel, our racks and cabinets are available preconfigured with everything from PDUs, cable management, and patching.



42U Server Cabinet
(42" Depth)
RCK-SC-42U-B-01



Wall Mount Cabinet
(Available Sizes: 9U, 12U, 15U,
and 18U)
RCK-WES-xxU-B-01



Pivot Wall Rack
(Available Sizes: 12U, 20U,
24U, and 32U)
RCK-WP-xxU-B-01



2-Post Rack
(Available Sizes:
24U, 44U, and 48U)
RCK-2P-xxU-B-01



**Vertical Wall-Mount
Bracket**
Available: 2U, 4U, 6U
MBx



1U Hinged Bracket
HB1



2U Hinged Bracket
HB2



3U Hinged Bracket
HB3



4U Hinged Bracket
HB4



6U Hinged Bracket
HB6

CABLE MANAGEMENT



Distribution Rings

2"
DSTR-2

3"
DSTR-3

5"
DSTR-5

1U Horizontal Cable Manager

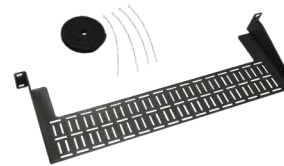
PRO-CBL-MGR-1U-5PR

2U Horizontal Cable Manager

PRO-CBL-MGR-2U-5PR

1UV Horizontal Cable Manager

PRO-CBL-MGR-1UV-4PR



1U Duct - Single (Horizontal Cable Manager)

CBL-MGR-1U-2

1U Duct - Double (Horizontal Cable Manager)

CBL-MGR-1U-24

2U Duct - Single (Horizontal Cable Manager)

CBL-MGR-2U

Lacing Shelf (Attaches to rear of bulkhead)

CBL-MGR-1U-SHELF

Plastic Twist Lock (Self-adhesive clip)

CBL-MGR-PTT-0.25I



Rolled Velcro®

CBL-HNL-75BK-075F

• Easily installs by sliding under existing panel

• Allows for different ring positions



1U Side Cable Manager

MET-1U-SM-V2

DATACOM

TEC Optix Solutions

ETHERNET MEDIA CONVERTERS



PN: MC-1500LC-MM550

- Convert between copper (RJ45) and either multimode or singlemode fiber (LC, SC or ST)
- Available model for MM/fiber to SM/fiber media conversion as well
- Auto-negotiates to 10/100 or 1Gbe line speed
- Plug-n-play solution for connecting mis-matched port media types
- Transparent-to-the-network – no port configuration involved!
- Extend the reach of copper ethernet ports beyond the 100M limit
- Rack-mountable chassis available for multi-unit deployments

FEATURE



BLADE HD

DESIGNED FOR FAST AND EASY INSTALLATION IN PON AND AE NETWORKS

Reduce labor costs and speed deployment with preloaded BladeHD FDH Cabinets. **Preloaded** with BladeHD Rack Mount Panels, BladeHD cassettes with fiber pigtailed and custom length BladeHD OSP Ruggedized Splitters for your application.

BladeHD SPLITTER CABINETS

- Installs on Pole or Pad • Up to 576 SC Ports • Designed for Ruggedized Splitters (sold separately) • Painted Stainless Steel • Vented Top

Up to
576
SC fibers!

**REDUCE LABOR COSTS
AND SPEED DEPLOYMENT**



288 SC Fiber BladeHD Outdoor Splitter Cabinet (FDH)
OCB-BHDFDH-SAxxx-04U



576 SC Fiber BladeHD Outdoor Splitter Cabinet (FDH)
OCB-BHDFDH-SAxxx-11U



144 SC Fiber BladeHD Outdoor Splitter Cabinet (FDH)
OCB-BHDFDH-SAxxx-08U

FEATURE



BladeHD Ruggedized Fiber Splitter (SC APC)
FS-RR-132-GH-SASA-M

Designed for BladeHD™ Outdoor Splitter Cabinet (FDH).

Ruggedized Splitters with SC/APC termination

Designed for outdoors and extended temperatures

CONFIGURATION TYPES:

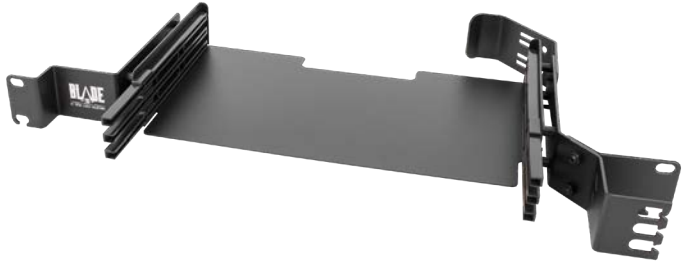
1x2, 1x4, 1x8, 1x16, 1x32, 2x2, 2x4, 2x8, 2x16, Multiple 1xN available

BladeHD CHASSIS

Up to
288
SC fibers!



4U BladeHD Rack Mount Patch Panel
FPP-BHD-4U



1U BladeHD Rack Mount Patch Panel
FPP-BHD-1U

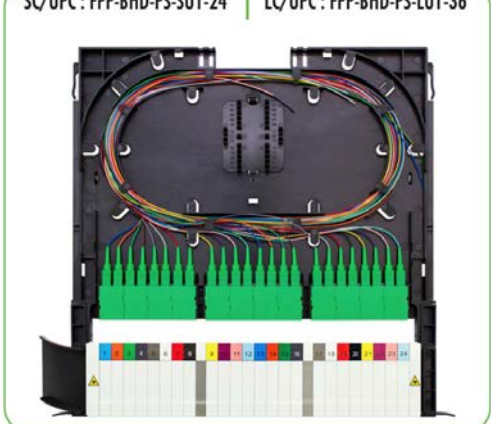
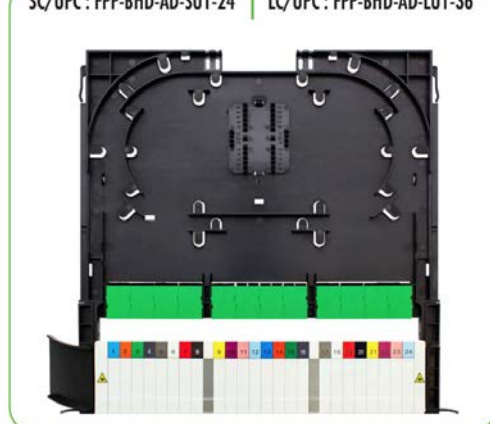
BladeHD CASSETTES

PASS THROUGH BLADES/CASSETTES

- SC/APC : FPP-BHD-AD-SA1-24
- LC/APC : FPP-BHD-AD-LA1-36
- SC/UPC : FPP-BHD-AD-SU1-24
- LC/UPC : FPP-BHD-AD-LU1-36

PRELOADED BLADES/CASSETTES

- SC/APC : FPP-BHD-PS-SA1-24
- LC/APC : FPP-BHD-PS-LA1-36
- SC/UPC : FPP-BHD-PS-SU1-24
- LC/UPC : FPP-BHD-PS-LU1-36



splicious . /spliSH s/

1. having or providing a ridiculously large splicing area and storage in an itty-bitty space

**MODULAR CASSETTE DESIGN
SCALES EASILY FOR RIDICULOUS
SC DENSITY IN A SMALL SPACE**

Blade/Cassettes Include:

- 24 splice sleeves (SC), if ribbon 2 / 36 splice sleeves (LC), if ribbon 3
- Cassette identification labels
- Port identification labels
- Right waterfall cable management
- Left waterfall cable management

Inventory stocked and custom built for your application right here in the U.S.



SC/APC Pass-Through
24 SC Fiber
FPP-BHD-AD-SA1-24



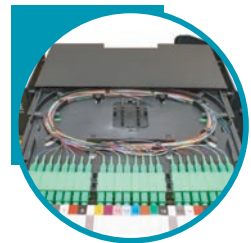
24 SC/APC
Pre-loaded w/SM pigtailed
FPP-BHD-PS-SA1-24



24 SC/UPC
Pre-loaded w/SM pigtailed
FPP-BHD-PS-SU1-24



SC/UPC Pass-Through
24 SC Fiber
FPP-BHD-AD-SU1-24



Large (splicious) Splicing Area



GAME CHANGING Front Entry



Rear Entry



Built-in Waterfalls



Hinged Front Cable Management
For easy access to each fiber



HYPERDROP

Designed for outdoor enclosures, pedestals, and equipment racks, the LYNN HyperDrop™ Fiber Distribution Terminal Assembly supports up to 12 MST fibers. Waterproof and designed for performance and durability. Available in 2, 4, 6, 8, and 12 fiber/port, ADSS, splitter, and bypass.

HyperDrop™ Fiber Distribution Terminal Assembly (MST)
HD-MST-xxxTA-xxxF

- COMPACT DESIGN** Slim body design accommodates up to 12 MST fibers, OptiTap® compatible
- FACTORY TERMINATED** 100% tested factory terminated pigtail
- OUTDOOR/RUGGED CONSTRUCTION** Installs quickly into outdoor enclosures, pedestals, and equipment racks
- TONEABLE** Copper conductor for easy cable location in underground applications (non-toneable available)

AVAILABLE
8 or 12
SC FIBER



HyperDrop™ Fiber Terminal Assembly
12 SC or 24 LC Ports, APC or UPC
HD-xxxx2-SMI-xxxF



HyperDrop™ - Pedestal Fiber Terminal Assembly
12 SC or 24 LC Ports, APC or UPC
HD-Dxxxx2-SMI-xxxF

AVAILABLE
2, 4, or 6
SC FIBER



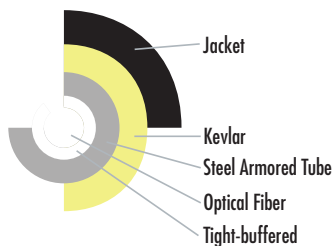
HyperDrop™ Fiber Terminal Assembly
6 SC or 12 LC Ports, APC or UPC
HD-xxxx2-SMI-xxxF



HyperDrop™ - Pedestal Fiber Terminal Assembly
6 SC or 12 LC Ports, APC or UPC
HD-Dxxxx2-SMI-xxxF

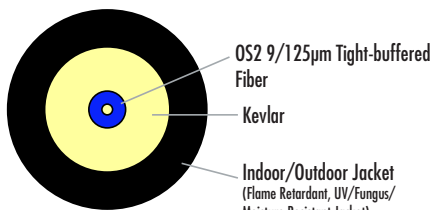
DROP CABLES

Micro-armored internal construction designed to protect cable in hazardous area.



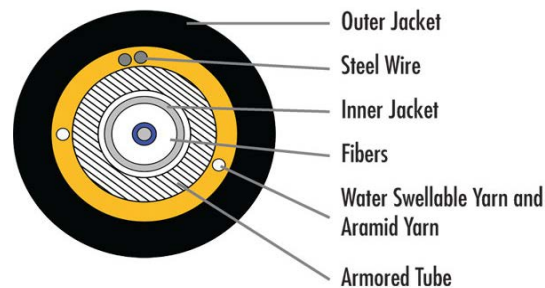
Micro-Armored Fiber (SMF)
S-SA1SA1-SMI3-xxxF

Staple without significant insertion loss (<0.1 dB)



Ruggedized Fiber (SMF)
S-SA1SA1-SRI3-xxxF

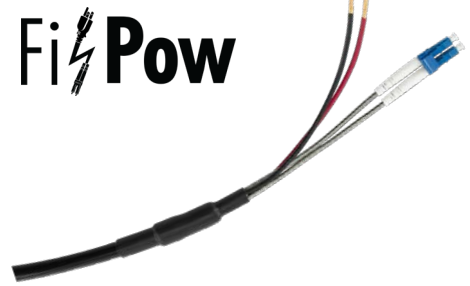
No more cables KINKING when pushing/pulling through walls or ducted pathways.



Pushable-Armored Fiber (SMF)
S-xxxxxx-NSHx3x-xxxF



Flat Drop Toneable Cable
with H Connector (OptiTap® Compatible)
MST-0A1xx-01ST-AxxxF



FiPOW
Designed for long distance/high power.
FiPOW Indoor/Outdoor Hybrid Cable
(Fiber with copper conductors)
Available 1-24 Fiber, 2-16 conductors, 12 or 16 AWG

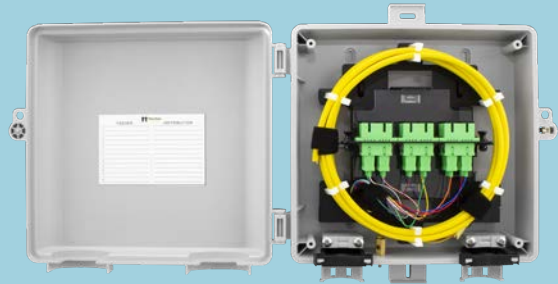
FIBER ENTRY TERMINALS

FEATURE



A compact Fiber Entry Terminal (FET) designed for flat and round drop cable entry and the harsh conditions in Outside Plant.

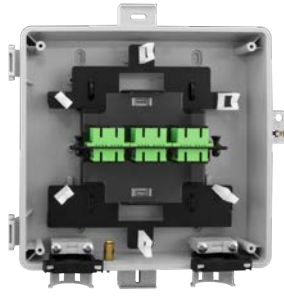
- Designed for flat and round cable entry (variable clamp entry securely holds both round and flat drop cables)
- Accepts up to 1-inch conduit
- Electrical copper ground lug included



TheNID - ONT
FPP-TN-M-93



TheNID - Splice
FPP-TN-A-86
TheNID - Splice Duplex
FPP-TN-AD-86



TheNID - LGX
FPP-TN-E-85



TheNID - Patch
FPP-TN-L-88



TheNID - Hardened
FPP-TN-T-89



Compact NID
FPP-6S-W-15



TheNID
FPP-TN-x-xx



16 SC NID
FPP-12S-W-16

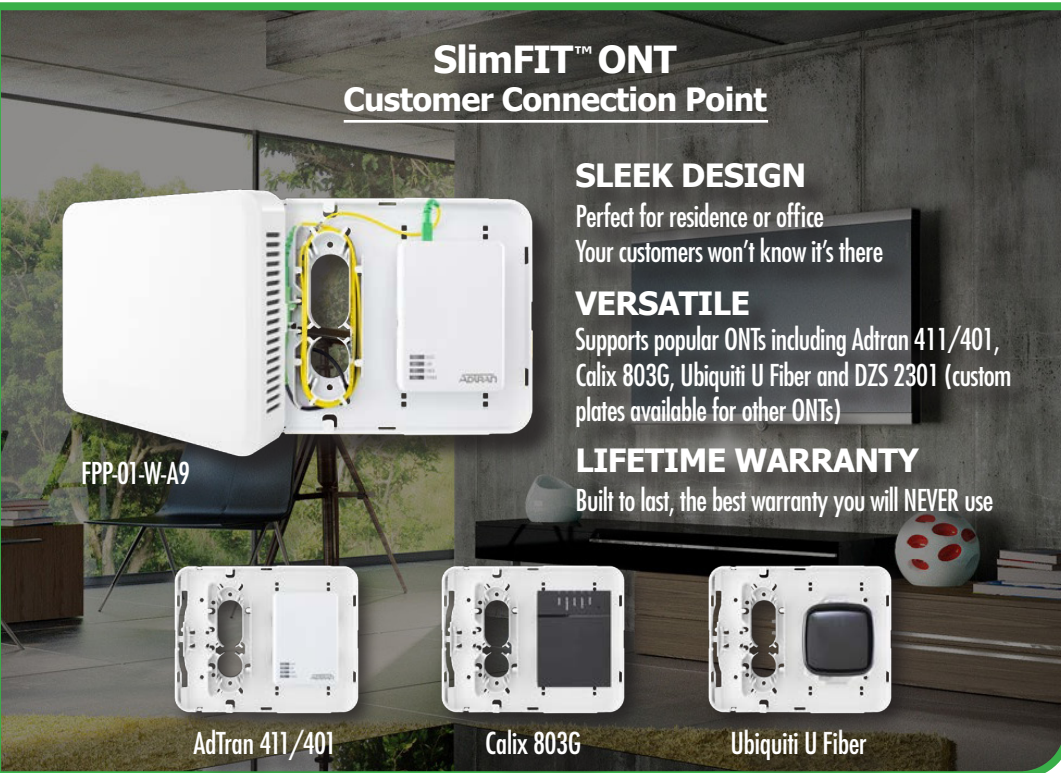


24 SC NID
FPP-24S-W-94

BROADBAND

FEATURE

SlimFIT™ ONT Customer Connection Point



FPP-01-W-A9

AdTran 411/401

Calix 803G

Ubiquiti U Fiber

SLEEK DESIGN

Perfect for residence or office
Your customers won't know it's there

VERSATILE

Supports popular ONTs including Adtran 411/401, Calix 803G, Ubiquiti U Fiber and DZS 2301 (custom plates available for other ONTs)

LIFETIME WARRANTY

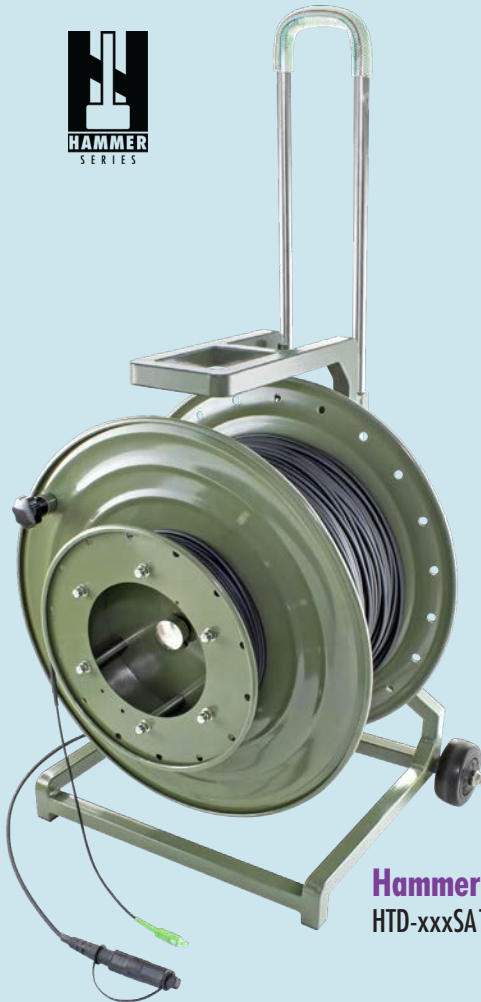
Built to last, the best warranty you will NEVER use



SlimFIT™
Customer Connection Point
FPP-01-W-35



SlimFIT™ Compact
Customer Connection Point
FPP-01-W-A3



Hammer Series TempDrop Designed to get users up and running NOW.

More Revenue

Light up customers immediately with our mobile temporary drop and start earning revenue quicker. Install the permanent service drop later.

Fast Repairs

Repair cuts the same day to get your customers up and running again.

Durable

Designed for the harsh conditions outdoors. Leave outside at customer's premise until permanent service drop is replaced.

Hammer Series TempDrop™
HTD-xxxSA1-SMI5-Z1000F

FEATURE

FIBER OPTIC PLC SPLITTERS

Fabricated using silica optical waveguide technology to distribute optical signals accurately and evenly with minimal loss providing a low-cost light distribution solution with small form factor and high reliability.



1x16 Rackmount PLC Splitter

FS-1xx-SA1-R
Available in 1x16,32

2x32 Rackmount PLC Splitter

FS-2xx-SA1-R
Available in 2x16,32

LGX 1x8 PLC Splitter

FS-1xx-SA1
Available in 1x2,4,8,16,32

LGX 2x16 PLC Splitter

FS-2xx-SA1
Available in 2x4,8,16,32

900 μ m

250 μ m



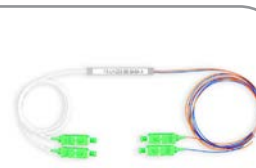
1x8 Mini-Module
900 μ m PLC Splitter - Underterminated
FS-LH-1xx-BB-NN-x
Also available in 1x2,4,16,32,64



2x32 Mini-Module
900 μ m PLC Splitter - Underterminated
FS-LH-2xx-BB-NN-x
Also available in 2x2,4,8,16



1x32 Mini-Module
900 μ m PLC Splitter - SC/APC
FFS-LH-1xx-BB-SASA-x
Also available in 1x2,4,8,16,64



2x2 Mini-Module
900 μ m PLC Splitter - SC/APC
FS-LH-2xx-BB-NN-x
Also available in 2x4,8,16,32,64



1x8 Bare Fiber
250 μ m PLC Splitter - singlemode
FS-BB-108-BB-NN=E
Also available in 1x2,4,16,32,64,
2x2,4,8,16,32,64



1x32 ABS Box
PLC Splitter - SC/APC
FS-22-132-BB-SASA-7
Also available in 1x2,4,8,16,32,64
2x4,8,16,32,64



BladeHD Ruggedized
PLC Fiber Splitter - SC/APC
FS-RR-132-GH-SASA-M
Also available in 1x2,4,8,16,32,
2x2,2,4,8,16,32, multiple 1xN available



Charles Ind. CFFP Compatible
Ruggedized PLC Fiber Splitter - SC/APC
FS-RR-xxx-JK-SASA-J
Also available in 1x16,32,
multiple 1x16 available



Clearfield FieldSmart® Compatible
Ruggedized PLC Fiber Splitter - SC/APC
FS-RR-xxx-HH-SASA-M
Also available in 1x2,4,8,16,32,
2x2,2,4,8,16,32, multiple 1xN available

FIBER OPTIC FBT SPLITTERS

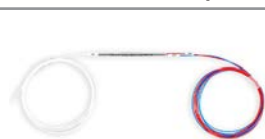
900 μ m

250 μ m



1x2 Dual Window (1310/1550nm)
900 μ m FBT Splitter - Underterminated
FS-LH-102-BB-NN-xD-F

1x2 Dual Window (1310/1550nm)
900 μ m FBT Splitter - SC/APC
FS-LH-103-BB-NN-KT-F



1x2 Tri-Window (1310/1490/1550nm)
900 μ m FBT Splitter - Underterminated
FS-LH-102-BB-NN-xT-F

1x2 Tri-Window (1310/1490/1550nm)
900 μ m FBT Splitter - SC/APC
FS-LH-103-BB-NN-KT-F



1x3 Tri-Window (1310/1490/1550nm)
900 μ m FBT Splitter - Underterminated
FS-LH-102-BB-NN-xT-F

1x3 Tri-Window (1310/1490/1550nm)
900 μ m FBT Splitter - SC/APC
FS-LH-102-BB-NN-xT-F



1x2 Tri-Window Bare Fiber
250 μ m Bare Fiber FBT Splitter - Underterminated
FS-LH-102-BB-NN-xT-F

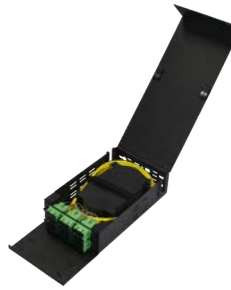
1x2 Dual Window (1310/1550nm)
250 μ m Bare Fiber FBT Splitter - Underterminated
FS-LH-102-BB-NN-xT-F
1x3 Tri-Window (1310/1490/1550nm)
250 μ m Bare Fiber FBT Splitter - Underterminated
FS-LH-102-BB-NN-xT-F

*Splits available: 40/60, 45/55, 35/65, 30/70, 25/75, 20/80, 15/85, 10/90, 5/95

Choice 1 LGX Wallmount Panel

FPP-01-W-10

*Pictured with optional heat-resistant splice chip and compression grommet (sold separately)



Choice 2 LGX Wallmount

FPP-02-W-18



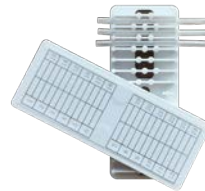
Choice 4 LGX Wallmount

FPP-04-W-19



DIN Rail Mounting Bracket

FPP-01-W-DINRAIL



Heat-Resistant Splice Chip

ST-PASD-24

Installing in a hot climate?

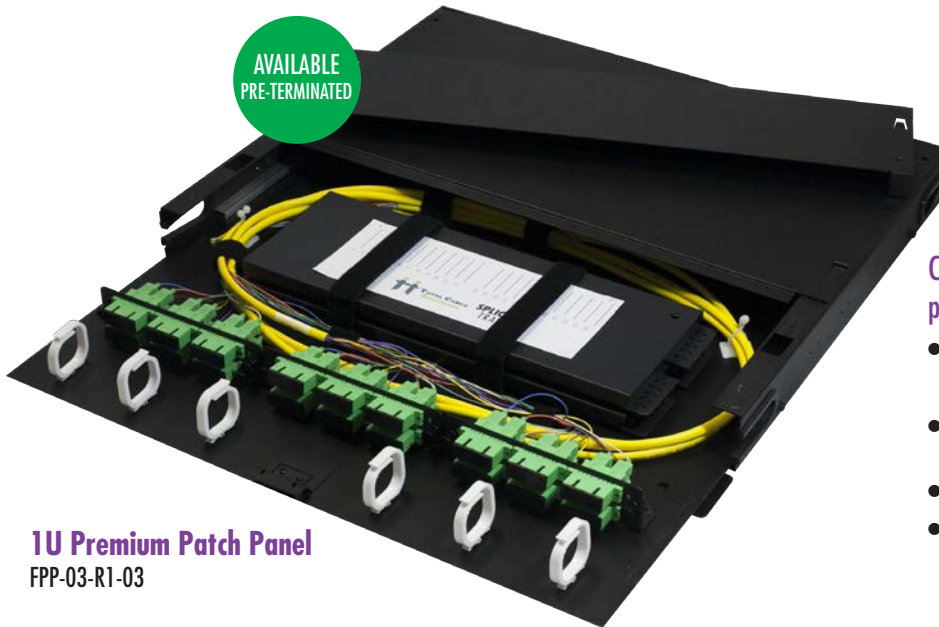
Our enhanced splice chip is designed for extreme climates and screws down for a secure connection.



Compression Grommet

CF-B

AVAILABLE
PRE-TERMINATED



1U Premium Patch Panel

FPP-03-R1-03

Constructed from premium grade steel, our Premium patch panels are designed for performance and high density.

- Pre-Terminated panel includes adapter panels, splice trays, and pigtails to meet your project needs
- MTP®/MPO cassettes available custom-built (usually ships within 24-48 hrs)
- Magnetic front and rear doors
- Delivered ready to splice



2U Premium Patch Panel

FPP-06-R2-04



3U Premium Patch Panel

FPP-09-R3-05



4U Premium Patch Panel

FPP-12-R4-06



8U Premium Patch Panel

FPP-24-R8-07



Choice Patch Panel

FPP-03-R1-23

CORE™ SERIES

Core™ Wallmount Enclosures are the new standard in access. The removable inner core allows for table-level adds and changes. Locking enclosure has dual hinges for easy access.



◀ Pre-installed bubble level



◀ Removable inner core allows for table-level access for patching, cleaning and organization



Core™ Hex
6 LGX Wallmount Enclosure
FPP-06-W-21



Core™ Twin
2 LGX Wallmount Enclosure
FPP-02-W-31



Core™ GIANT
14 LGX Wallmount Enclosure
FPP-14-W-25-V2

FEATURE | FIBERGLASS ENCLOSURE

OUTDOOR FIBER DISTRIBUTION TERMINAL



FPP-05-W-67



Internal Weather Stripping



Padlockable Latches



Customized for your application

Tough Fiberglass

Designed for extreme climates, NEMA 4x, and IP66 rated

Secure

Padlockable latches to secure contents

Fast Deployment

Multiple configurations for splicing, patching, and patching for fast FTTx deployment

PATCH PANEL FRAMES

LYNN provides a wide range of bulkheads, supporting a variety of patching needs. All of our bulkheads are constructed of quality steel and offer the following:

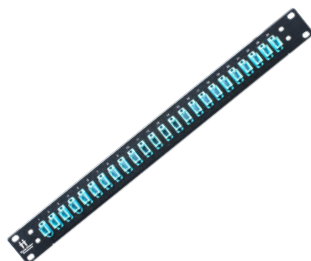
- Silk-screened with port numbers for easy identification
- Low profile for cost-effective and easy-to-use patching



LGX Frame
FPP-03-R1-24



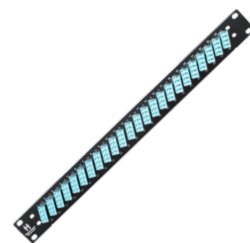
18 Port Bulkhead
(Available in SC only)
FP-18SS-xxx



24 Port Bulkhead
FP-24LL-xxx (LC)
FP-24SS-xxx (SC)
FP-24MM-xxx (MTP®)



36 Port Bulkhead
FP-36LL-xxx (LC)
FP-36SS-xxx (SC)
FP-36MM-xxx (MTP®)



48 Port Bulkhead
FP-48LL-xxx (LC)
FP-48MM-xxx (MTP®)

FIBER CASSETTES

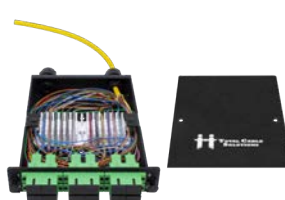
Base 24, 12 & 8 Available



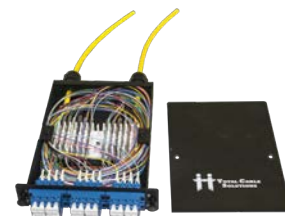
LGX Cassettes
(Standard LGX size)
FPP-CS-PML2S-OM4-24



CCH™ Cassettes
(Corning® CCH™ Compatible*)
FPP-CS-PM2L2-OM4-24-CCH



SC LGX Splice Cassettes
(Custom made to fit your application)



LC LGX Splice Cassettes
(Custom made to fit your application)

SPLICE TRAYS & ACCESSORIES



12 Fiber Splice Tray
(Plastic)
ST-PA-12



24 Fiber Splice Tray
(Plastic)
ST-PA-24



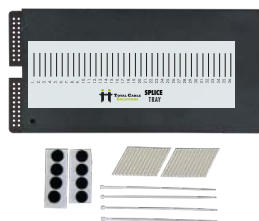
12 Fiber Splice Tray
(Metal)
ST-M-12



24 Fiber Splice Tray
(Metal, 12in.)
ST-M-24



24 Fiber Splice Tray
(Metal, 8in.)
ST-M-24-8



36 Fiber Splice Tray
(Metal)
ST-M-36



40mm Single Fusion
(Splice Sleeves)
ST-FPS-40MM-50



60mm Single Fusion
(Splice Sleeves)
ST-FPS-60MM-50



40mm Ribbon
(Splice Sleeves)
ST-RPS-40MM-50

GPON & WDM TRANSCEIVERS

Available in a variety of reaches, wavelengths and support for major brand devices



1G BiDi SFP
1G CWDM SFP
1G DWDM SFP



10G BiDi SFP+
10G CWDM SFP+
10G DWDM SFP+

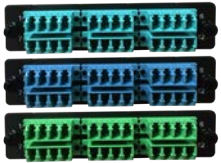


GPON B+/C+

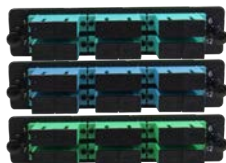


1G SFP
10G SFP+
25G SFP28

LGX ADAPTER PLATES



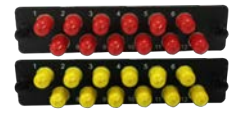
LGX LC Adapter Plate
 12, 16, or 24 Fiber
 FPP-AD-Lxxx-xx
 Available with internal shutters



LGX SC Adapter Plate
 6, 8, or 12 Fiber
 FPP-AD-Sxx-xx



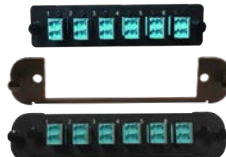
LGX MTP® Adater Plate
 6, 8, 12, or 24 Fiber
 FPP-AD-Mxx-xx



LGX ST Adapter Plate
 6 or 12 Fiber
 FPP-AD-Tx1-xx



LGX FC Adapter Plate
 6 or 12 Fiber
 FPP-AD-Fx1-xx



LGX to CCH™ Converter Plates
 (Converts LGX to Corning® CCH)
 FPP-AD-CCH



LGX Keystone Plate
 FPP-AD-6BK-06



LGX Blank Plate
 FPP-AD-BLANK

CCH™ COMPATIBLE ADAPTER PLATES



CCH™ Compatible LC
 12 or 24 Fiber
 FPP-AD-LxQ-xx-C
 Available with internal shutters



CCH™ Compatible MTP®
 6 or 12 Fiber
 FPP-AD-Mx2-xx-C



CCH™ Compatible SC
 6 or 12 Fiber
 FPP-AD-Sx2-xx-C

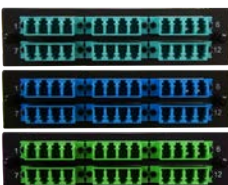


CCH™ Compatible ST
 12 Fiber
 FPP-AD-Sx1-12-C

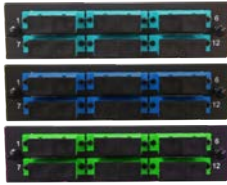


CCH™ Compatible FC
 12 Fiber
 FPP-AD-Fx1-12-C

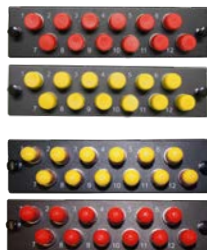
LEVITON COMPATIBLE ADAPTER PLATES



LC Plates
 12 or 24 Fiber
 FPP-AD-LxQ-xx-L



SC Plates
 6 or 12 Fiber
 FPP-AD-Sx2-xx-L



ST or FC Plates
 12 Fiber
 FPP-AD-xx1-12-L



MTP® Plates
 6 or 12 Fiber
 FPP-AD-Mx2-xx-L



Blank Plate
 FPP-AD-BLANK-LV

FEATURE

Fiber Network Simulator

Bench mark testing of WAN, SAN, or Telecom Systems Engineering performance testing System Simulation for Optical Transport.

- 19" Reversible Mounting Bracket to Support Both Datacom and Telecom Racks
- 6RU Chassis with Plexi-Glass Front
- Supports up to 225km using (9) 25km reels

Applications:

Telecommunications, Fiber to the Home, CATV, Video Transmission, Local Area Networks, Testing laboratories, Fiber Optic Sensing



6U Fiber Test Unit
FDS-SM-XXX-XXX-6U



Fiber Launch Cable
150,300,500 or 1,000m
LCR-SA1SA1-SM3-xxxxM



Loopback Adapters
Available in SM & MM, SC, LC, MPO
LB-xxxx-xR-HS



Loopback Patch Cords
Available in SM & MM, SC, LC, MPO
LB-xxx-SR3



Loopback Attenuators
Available in SM & MM, SC, LC, MPO
ATT-L-xx-HS



Fiber Optic Attenuators
Available in SM & MM, SC, LC, MPO
ATT-x-xx

FIBER CLEANERS



MTP®/MPO Cleaner
12 or 16 Fiber
FOC-MTPxx-P



LC Cleaner
Simplex or Duplex
FOC-LCx-OC



HC Cleaner
OptiTap® Compatible
FOC-HC-P



HC Cleaner II
OptiTip® Compatible
FOC-TIP-P



SC Cleaner
Cleans SC, FC, ST, D4, E2000
FOC-SC-OC



OPTIPOP R 2-Slot Cleaner
Cleans LC, MU
FOC-LC-6437



OPTIPOP R MTP® Cleaner
Male or Female Available
FOC-MTP-633x



OPTIPOP R
Cleaning Cassette Re-Fill
6-pack
FOC-6232

FIBER PIGTAILS



OM3 900µm Pigtail
(Simplex)
S-x1BL-3RW9-xxxM



OM1 900µm Pigtail
(Simplex)
S-x1BL-1RW9-xxxM



Singlemode 900µm Pigtail
(Simplex)
S-xx1BL-SRW9-xxxM



6 Fiber OM4 Pigtail
(900 µm)
T6-x119-BL-4RD-xxxM



6 Fiber OM1 Pigtail
(900 µm)
T6-x119-BL-1RD-xxxM



6 Fiber SMF Pigtail
(900 µm)
T6-xx119-BL-SPD-xxxM



12 Fiber OM4 Pigtail
(900 µm)
T12-x119-BL-4RD-xxxM



12 Fiber OM3 Pigtail
(900 µm)
T12-x119-BL-3RD-xxxM



12 Fiber OM1 Pigtail
(900 µm)
T12-x119-BL-1RD-xxM



12 Fiber SMF Pigtail
(900 µm) Ribbon or Distribution
T12-xx119-BL-SPR-xxxM
T12-xx119-BL-SPD-xxxM

COPPER - PREMISE ACCESSORIES



1 Port Surface Mount Box
PRO-SMB-KEY-1-xx



2 Port Surface Mount Box
PRO-SMB-KEY-2-xx



1 Port Face Plate
(Single Gang)
PRO-FP-KEY-1-xx



2 Port Face Plate
(Single Gang)
PRO-FP-KEY-2-xx



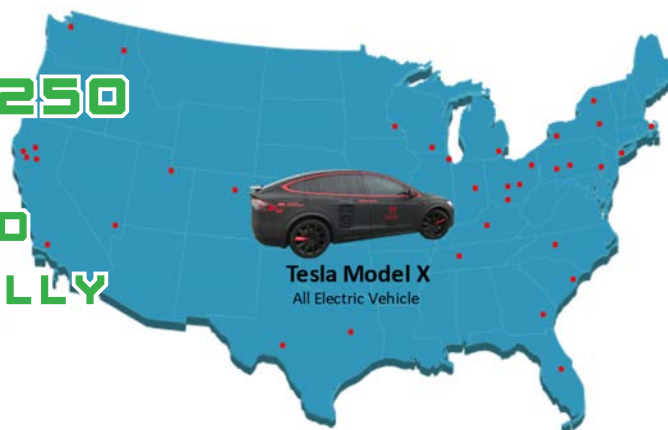
3 Port Face Plate
(Single Gang)
PRO-FP-KEY-3-xx

MOBILE SHOWROOM

Demonstrating the latest connectivity innovations for Data Centers and Broadband



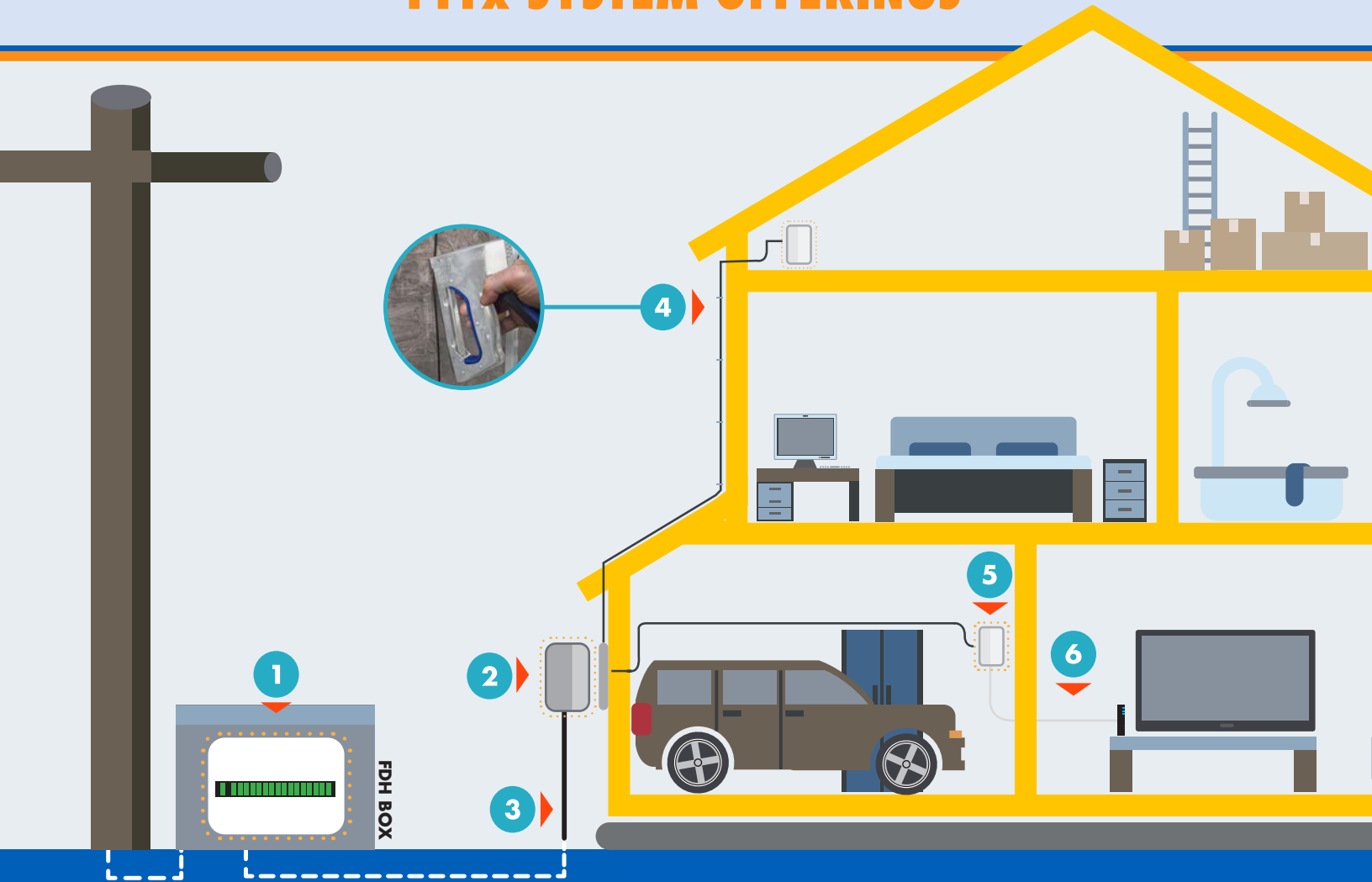
**OVER 250
CITIES
VISITED
ANNUALLY**



Tesla Model X
All Electric Vehicle

LYNN

FTTx SYSTEM OFFERINGS



1 FIBER OPTIC SPLITTERS

- Available in LGX, Rackmount and Inline formats
- Designed for high density cabling environment
- Silk screened port number for easy identification
- Fits standard distribution or network cabinet



2 FIBER DISTRIBUTION TERMINAL

- Accommodates select PLC splitters or loaded fiber pigtailed using fusion splicing
- Constructed of the highest quality industrial plastic
- Designed for the harshest outdoor elements, IP65
- Aesthetic appearance includes a glossy finish
- Suitable for wall mounting to building
- Optional company logo silk screening available



3 OSP FTTx DROP CABLE

- OptiTap® Compatible*
- Ruggedized SC APC & SC UPC connectors available
- Designed for direct burial, duct, & self-supporting installations
- Water Blocking Aramid Yarn
- Custom lengths, ships in 2-3 days
- Flat Drop cable style available



4 INDOOR/OUTDOOR RUGGEDIZED PATCH CABLE

- Corning® Clearcurve™ SMF-28 Ultra BIF
- Ruggedized, designed to install with staples
- Meets water penetration requirements of Telcordia GR-20-CORE
- Passed Verizon TPR 9424 Issue 2 60 staple test
- Custom lengths, ships in 2-3 days



5 SLIMFIT™ CUSTOMER CONNECTION POINT

- Aesthetic appearance includes a white gloss finish
- Suitable for indoor use in residence or office
- Easily store excess cable inside enclosure or outlet
- Fast installation. Mounts directly single gang low-voltage bracket or outlet box.



6 FIBER DEPLOYMENT PATCH CABLE

- SC APC to SC UPC Corning® Clearcurve™ SMF-28 Ultra BIF
- Available in brilliant white for in-home aesthetic
- Fiber keystone jack & wall plate available



LYNN, Inc. is not affiliated with Charles Industries, Clearfield, Inc., Corning, Inc., Panduit, Leviton Manufacturing Company, Inc., US Conect, Ltd., or Velcro BVBA. All Charles Industries, Clearfield, Corning (including OptiTap®), Panduit, Leviton, and Velcro product names are trademarks or registered trademarks of Corning, Inc., Panduit, Leviton Manufacturing Company, Inc., and Velcro BVBA respectively. MTP® is a registered trademark of US Conect, Ltd. All products are available as pictured in this document. Some products displayed may include optional equipment.