



**J-Hook, Bridle Ring ,
Magnetic Clips and
Magnetic J-Hook**

Full Line Catalog

**954-581-6688 800-822-2604
sales@newtechindustries.com**



CH050WH

1/2" Cable Holder with
Locking Gate Feature,
5mm Center Hole, White



CH050BK

1/2" Cable Holder with
Locking Gate Feature,
5mm Center Hole, Black



CH075WH

3/4" Cable Holder with
Locking Gate Feature,
5mm Center Hole, White



CH075BK

3/4" Cable Holder with
Locking Gate Feature,
5mm Center Hole, Black



CH100WH

1" Cable Holder with
Locking Gate Feature,
5mm Center Hole, White



CH100BK

1" Cable Holder with
Locking Gate Feature,
5mm Center Hole, Black



CH125WH

1 1/4" Cable Holder with
Locking Gate Feature,
5mm Center Hole, White



CH125BK

1 1/4" Cable Holder with
Locking Gate Feature,
5mm Center Hole, Black



MCH050WH

1/2" Magnetic Cable Holder with Locking Gate Feature, White
16 lb Magnet



MCH075WH

3/4" Magnetic Cable Holder with Locking Gate Feature, White
16 lb Magnet



MCH100WH

1" Magnetic Cable Holder with Locking Gate Feature, White
26 lb Magnet



MCH125WH

1 1/4" Magnetic Cable Holder with Locking Gate Feature, White
26 lb Magnet



MCH050BK

1/2" Magnetic Cable Holder with Locking Gate Feature, Black
16 lb Magnet



MCH075BK

3/4" Magnetic Cable Holder with Locking Gate Feature, Black
16 lb Magnet



MCH100BK

1" Magnetic Cable Holder with Locking Gate Feature, Black
26 lb Magnet



MCH125BK

1 1/4" Magnetic Cable Holder with Locking Gate Feature, Black
26 lb Magnet



JH12MAG

3/4" J Hook with
Side Mounted
100 lb Magnet



JH12ACMAG

3/4" J Hook with
Top Mounted
100 lb Magnet



WH21MAG

1 5/16" J Hook with
Side Mounted
100 lb Magnet



JH21ACMAG

1 5/16" J Hook with
Top Mounted
100 lb Magnet



JH32MAG

2" J Hook with
Side Mounted
100 lb Magnet



JH32ACMAG

2" J Hook with
Top Mounted
100 lb Magnet



JH64MAG

4" J Hook with
Side Mounted
100 lb Magnet



JH64ACMAG

4" J Hook with
Top Mounted
100 lb Magnet



JH96MAG

6" J Hook with
Side Mounted
100 lb Magnet



JH96ACMAG

6" J Hook with
Top Mounted
100 lb Magnet



BR075MAG

3/4" Magnetic Bridle Ring
Small Standoff
26 lb Magnet

Also Available in Black



BR125MAG

1 1/4" Magnetic Bridle Ring
Small Standoff
100 lb Magnet



BR200MAG

2" Magnetic Bridle Ring
Small Standoff
100 lb Magnet



BR200SDLMAG

2" Magnetic Bridle Ring
Support Saddle
100 lb Magnet



BRL075MAG

3/4" Magnetic Bridle Ring
1.5" From Base Of Magnet
26 lb Magnet



BRL125MAG

1 1/4" Magnetic Bridle Ring
1.5" From Base Of Magnet
100 lb Magnet



BRL200MAG

2" Magnetic Bridle Ring
1.5" From Base Of Magnet
100 lb Magnet



BRL400MAG

2" Magnetic Bridle Ring
1.5" From Base Of Magnet
100 lb Magnet

INVENTORY ON HAND

QUICK TURNAROUND



DR200MAG

Magnetic 2"
Distribution Ring



DR300MAG

Magnetic 3"
Distribution Ring



DR500MAG

Magnetic 5"
Distribution Ring



MAG100GRIPUV

26lb Magnetic 1 Inch
Wide .875" Opening
Grip Tape Mount - UV Black

MAG16CTWH

16lb Magnetic Cable
Tie Mount - White/Natural

MAG16CTUV

16lb Magnetic Cable
Tie Mount - UV Black

MAG26CTWH

26lb Magnetic Cable
Tie Mount - White/Natural

MAG26CTUV

26lb Magnetic Cable
Tie Mount - UV Black



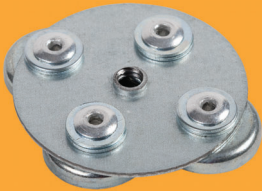
MAG1420M

100 lb Mounting Magnet
With 1/4" - Externally
Threaded Stud



MAG1420F

100 lb Mounting Magnet
With 1/4" - 20 Internally
Threaded Screw



MAG4TFW

Fender Washer With 1/4" - 20
Threaded Middle And
4 Riveted 26lb Magnets



MAG16

16 lb Mounting Magnet
With 5mm Diameter Hole
Inside Steel Cup
3/4" Outside Diameter
Steel Cup



MAG26

26 lb Mounting Magnet
With 5mm Diameter Hole
Inside Steel Cup
1" Outside Diameter
Steel Cup

NEW 316 STAINLESS STEEL PRODUCTS



See J Hooks on Page #7
Bridal Rings on Page #18



JH12ACM912

3/4" J Hook
w/ Hammer On
9/16 - 3/4" Flange
360 Degree
Rotation



JH21ACM912

1 5/16" J Hook
w/ Hammer On
9/16 - 3/4" Flange
360 Degree Rotation



JH32ACM912

2" J Hook
w/ Hammer On
9/16 - 3/4" Flange
360 Degree Rotation



JH64ACM912

4" J Hook
With Hammer On
9/16 - 3/4" Flange
360 Degree Rotation



JH96ACM912

6" J Hook
With Hammer On
9/16 - 3/4" Flange
360 Degree Rotation



JH12AF14

3/4" J Hook With Hammer on
1/8" - 1/4" Angled Flange



JH21AF14

1 5/16" J Hook With Hammer on
1/8" - 1/4" Angled Flange



JH32AF14

2" J Hook With Hammer on
1/8" - 1/4" Angled Flange



JH64AF14

4" J Hook With Hammer on
1/8" - 1/4" Angled Flange



JH96AF14

6" J Hook With Hammer on
1/8" - 1/4" Angled Flange



JH12

¾" Basic J Hook



JH21

1½" Basic J Hook



JH32

2" Basic J Hook



JH64

4" Basic J Hook



JH96

6" Basic J Hook



JH12SS

¾" Basic J Hook
316 Stainless Steel



JH21SS

1½" Basic J Hook
316 Stainless Steel



JH32SS

2" Basic J Hook
316 Stainless Steel



JH64SS

4" Basic J Hook
316 Stainless Steel



JH12WH

3/4" Basic J Hook
In White Color



JH21WH

1 5/16" Basic J Hook
In White Color



JH32WH

2" Basic J Hook
In White Color



JH64WH

4" Basic J Hook
In White Color



JH96WH

6" Basic J Hook
In White Color



JH12BK

3/4" Basic J Hook
In Black Color



JH21BK

1 5/16" Basic J Hook
In Black Color



JH32BK

2" Basic J Hook
In Black Color



JH64BK

4" Basic J Hook
In Black Color



JH96BK

6" Basic J Hook
In Black Color



JH12W

¾" J Hook With Batwing



JH21W

1 5/16" J Hook With Batwing



JH32W

2" J Hook With Batwing



JH64W

4" J Hook With Batwing



JH96W

6" J Hook With Batwing



JH12CC075

¾" J Hook With
¾" Conduit Clamp



JH21CC075

1 5/16" J Hook With
¾" Conduit Clamp



JH32CC075

2" J Hook With
¾" Conduit Clamp



JH64CC075

4" J Hook With
¾" Conduit Clamp



JH96CC075

6" J Hook With
¾" Conduit Clamp



JH12AC

3/4" J Hook
With Angle Clip



JH21AC

1 5/16" J Hook
With Angle Clip



JH32AC

2" J Hook
With Angle Clip



JH64AC

4" J Hook
With Angle Clip



JH96AC

6" J Hook
With Angle Clip



JH12ACPA

3/4" J Hook With
Pre-attached Nail



JH21ACPA

1 5/16" J Hook With
Pre-attached Nail



JH32ACPA

2" J Hook With
Pre-attached Nail



JH64ACPA

4" J Hook With
Pre-attached Nail



JH96ACPA

6" J Hook With
Pre-attached Nail



JH12HOK-24

¾" J Hook With Hammer
On ⅛"-¼" Flange



WH21HOK-24

1⅝" J Hook With Hammer
On ⅛"-¼" Flange



JH32HOK-24

2" J Hook With Hammer
On ⅛"-¼" Flange



JH64HOK-24

4" J Hook With Hammer
On ⅛"-¼" Flange



WH96HOK-24

6" J Hook With Hammer
On ⅛"-¼" Flange



JH12HOK-58

¾" J Hook With Hammer
On ⅝"-½" Flange



JH21HOK-58

1⅝" J Hook With Hammer
On ⅝"-1/2" Flange



JH32HOK-58

2" J Hook With Hammer
On ⅝"-½" Flange



JH64HOK-58

4" J Hook With Hammer
On ⅝"- ½" Flange



JH96HOK-58

6" J Hook With Hammer
On ⅝"- ½" Flange



JH12ACM24

3/4" J Hook With Hammer
On 1/8"-1/4" Flange
360 Degree Rotation



JH21ACM24

1 5/16" J Hook With Hammer
On 1/8"-1/4" Flange
360 Degree Rotation



JH32ACM24

2" J Hook With Hammer
On 1/8"-1/4" Flange
360 Degree Rotation



JH64ACM24

4" J Hook With Hammer
On 1/8"-1/4" Flange
360 Degree Rotation



JH96ACM24

6" J Hook With Hammer
On 1/8"- 1/4" Flange
360 Degree Rotation



JH12ACM58

3/4" J Hook With Hammer
On 5/16"-1/2" Flange
360 Degree Rotation



JH21ACM58

1 5/16" J Hook With Hammer
On 5/16"-1/2" Flange
360 Degree Rotation



JH32ACM58

2" J Hook With Hammer
On 5/16"-1/2" Flange
360 Degree Rotation



JH64ACM58

4" J Hook With Hammer
On 5/16"-1/2" Flange
360 Degree Rotation



JH96ACM58

6" J Hook With Hammer
On 5/16"-1/2" Flange
360 Degree Rotation



JH12SSBC

3/4" J Hook With
Spring Steel Beam Clamp



JH21SSBC

1 5/16" J Hook With
Spring Steel Beam Clamp



JH32SSBC

2" J Hook With
Spring Steel Beam Clamp



WH64SSBC

4" J Hook With
Spring Steel Beam Clamp



JH96SSBC

6" J Hook With
Spring Steel Beam Clamp



JH12ACSSBC

3/4" J Hook With
Spring Steel Beam Clamp
360 Degree Rotation



JH21ACSSBC

1 5/16" J Hook With
Spring Steel Beam Clamp
360 Degree Rotation



JH32ACSSBC

2" J Hook With
Spring Steel Beam Clamp
360 Degree Rotation



JH64ACSSBC

4" J Hook With
Spring Steel Beam Clamp
360 Degree Rotation



JH96ACSSBC

6" J Hook With
Spring Steel Beam Clamp
360 Degree Rotation



JH12PBC

3/4" J Hook With
Pressed Steel Beam Clamp



JH12ACPBC

3/4" J Hook With
Pressed Steel Beam Clamp
360 Degree Rotation



JH21PBC

1 5/16" J Hook With
Pressed Steel Beam Clamp



JH21ACPBC

1 5/16" J Hook With
Pressed Steel Beam Clamp
360 Degree Rotation



JH32PBC

2" J Hook With
Pressed Steel Beam Clamp



JH32ACPBC

2" J Hook With
Pressed Steel Beam Clamp
360 Degree Rotation



JH64PBC

4" J Hook With Pressed
Steel Beam Clamp



JH64ACPBC

4" J Hook With
Pressed Steel Beam Clamp
360 Degree Rotation



JH96PBC

6" J Hook With Pressed
Steel Beam Clamp



JH96ACPBC

6" J Hook With
Pressed Steel Beam Clamp
360 Degree Rotation



JH12TOG

¾" J Hook With Toggle Bolt
And Fender Washer

JH21TOG

1 ⅝" J Hook With Toggle Bolt
And Fender Washer

JH32TOG

2" J Hook With Toggle Bolt
And Fender Washer

JH64TOG

4" J Hook With Toggle Bolt
And Fender Washer

JH96TOG

6" J Hook With Toggle Bolt
And Fender Washer

COLORED JHOOKS

*Ask about having your
JHooks in any **color!***





JHT-2JH21SD

2 - 1 5/16" J Hooks On
One Side Of A J Hook Tree



JHT-2JH32SD

2 - 2" J Hooks On
One Side Of A J Hook Tree



JHT-2JH64SD

2 - 4" J Hooks On
One Side Of A J Hook Tree



JHT-2JH96SD

2 - 6" J Hooks On
One Side Of A J Hook Tree



JHT-3JH21SD

3 - 1 5/16" J Hooks On
One Side Of A J Hook Tree



JHT-3JH32SD

3 - 2" J Hooks On
One Side Of A J Hook Tree



JHT-3JH64SD

3 - 4" J Hooks On
One Side Of A J Hook Tree



JHT-3JH96SD

3 - 6" J Hooks On
One Side Of A J Hook Tree



JHT-4JH21SD

4 - 1 5/16" J Hooks On
One Side Of A J Hook Tree



JHT-4JH32SD

4 - 2" J Hooks On
One Side Of A J Hook Tree



JHT-4JH64SD

4 - 4" J Hooks On
One Side Of A J Hook Tree



JHT-4JH96SD

4 - 6" J Hooks On
One Side Of A J Hook Tree



JHT-2JH21DBL

2 - 1 5/16" J Hooks Doubled
Up On A J Hook Tree



JHT-2JH32DBL

2 - 2" J Hooks Doubled
Up On A J Hook Tree



JHT-2JH64DBL

2 - 4" J Hooks Doubled
Up On A J Hook Tree



JHT-2JH96DBL

2 - 6" J Hooks Doubled
Up On A J Hook Tree



JHT-4JH21DBL

4 - 1 5/16" J Hooks Doubled
Up On A J Hook Tree



JHT-4JH32DBL

4 - 2" J Hooks Doubled
Up On A J Hook Tree



JHT-4JH64DBL

4 - 4" J Hooks Doubled
Up On A J Hook Tree



JHT-4JH96DBL

4 - 6" J Hooks Doubled
Up On A J Hook Tree



BR125WS

1 1/4" Wood Screw
Bridle Ring



BR200WS

2" Wood Screw
Bridle Ring



BR4T125

1 1/4" Bridle Ring
1/4"-20 Thread



BR4T200

2" Bridle Ring
1/4"-20 Thread



BR4T400

4" Bridle Ring
1/4"-20 Thread



BR4T125SS

1 1/4" Wood Screw
Bridle Ring
316 Stainless Steel



BR4T200SS

2" Bridle Ring
1/4"-20 Thread
316 Stainless Steel



BR4T400SS

4" Bridle Ring
1/4"-20 Thread
316 Stainless Steel



BR125TOG

1 1/4" Bridle Ring With
Fender Washer And
Toggle Bolt



BR125TOG

2" Bridle Ring With
Fender Washer And
Toggle Bolt



BR125DW

1 1/4" Preassembled
Dry Wall Anchor
10-24 Bridle Ring



BR200DW

2" 10-24 Bridle Ring
With Preassembled
Dry Wall Anchor



BRS200

2" Saddle For
2" Bridle Rings
Plastic Only



BR4T200SDL

2" Saddle Preassembled
To 2" Bridle Ring
1/4"-20 Thread



BR200SDLWS

2" Saddle Preassembled
To 2" Bridle Rings
Wood Screw Thread



BR125LAG

1 1/4" Bridle Ring
With 1.5" Lag Screw



BR200LAG

2" Bridle Ring
With 1.5" Lag Screw



BR400LAG

4" Bridle Ring
With Lag Screw



PBCBR125BTM

1 1/4" Bridle Ring
Preassembled To
PBC On Bottom



ACTBR125

1 1/4" Bridle Ring
With Preassembled Nail



ACTBR200

2" Bridle Ring
With Preassembled Nail



ACTBR400

4" Bridle Ring
With Preassembled Nail



PBCBR125SD

1 1/4" Bridle Ring
Preassembled To
PBC On Side



MAGNETIC BRIDLE RINGS

SEE PAGE #3



DR200

2" Cast Aluminum
Distribution Ring



DR300

3" Cast Aluminum
Distribution Ring



DR500

5" Cast Aluminum
Distribution Ring



ODR250

2" Deep X 2" High
Open Cast Aluminum
Distribution Ring



ODR350

3" Deep X 3 1/2" High
Open Cast Aluminum
Distribution Ring



ODR375

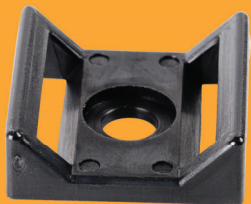
3" Deep X 3" High
Open Cast Aluminum
Distribution Ring



.50" Self Gripping,
Hook And Loop Tape
75 ft. Roll



.75" Self Gripping,
Hook And Loop Tape
75 ft. Roll



1" Wide Cable Tie
.875" Opening

Fastens Grip Tape, Hook
And Loop, Cables Ties, Etc



ESG1

Easy Snap Plastic Grommet
For Metal Studs 1.315" OD



ESGP

Easy Snap Plastic Grommet
Anti Rattle Protection
1.315" OD



CTMWH

White Cable Tie Mount
Fits Standard Cable Ties



CTMBK

Black Cable Tie Mount
Fits Standard Cable Ties



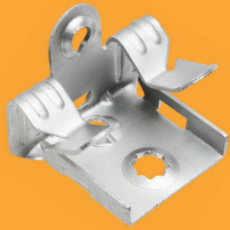
MAGNETIC HOOKS

SEE PAGE #4



M24

Hammer On Spring Steel
1/8 - 1/4" Flange
1/4 - 20 Keyed Screw Hole
on Back and Bottom



M58

Hammer On Spring Steel
5/16 - 1/2" Flange
1/4 - 20 Keyed Screw Hole
on Back and Bottom



M912

Hammer On Spring Steel
9/16 - 1/2" Flange
1/4 - 20 Keyed Screw Hole
on Back and Bottom



HOK24

Hammer 1/8" - 1/4" Flange
1/4" Hole



HOK58

Hammer 5/16" - 1/2" Flange
1/4" Hole



PBC

Pressed Steel Beam Clamp
1/4" - 20 Threading
on Back and Bottom



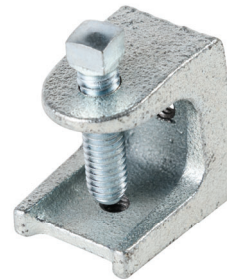
SSBC

Spring Steel Beam Clamp
1/4" - 20 And 10-24 Threading



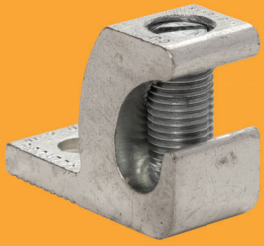
MBC4T

1/4" - 20 Malleable
Beam Clamp



MBC4T-WM

1/4" - 20 Malleable
Beam Clamp With
1 1/4" Wide Jaw Opening



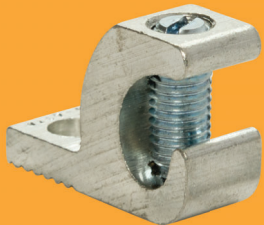
1-0-8AL

1/0-8 Lay In Ground Lug
Aluminum



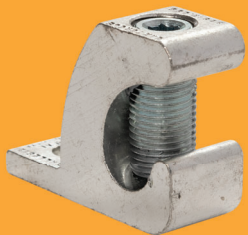
3-0-6AL

3/0-6 Lay In Ground Lug
Aluminum



4-14AL

4-14 Lay In Ground Lug
Aluminum



250MCM-6AL

250 mcm-6
Lay In Ground Lug
Aluminum



WT1 GRAY

Wire Tie Connector (300v)
Min 3#22 to Max 2#16



WT1 YELLOW

Wire Tie Connector
Min 2#14 to Max 4#12



WT2 BLUE

Wire Tie Connector (300v)
Min 3#20 to Max 3#16



WT3 ORANGE

Wire Tie Connector (600v)
Min 2#18 to Max 2#14



AC

90 Degree Angle Clip
13 Gauge 2 Holes ¼"



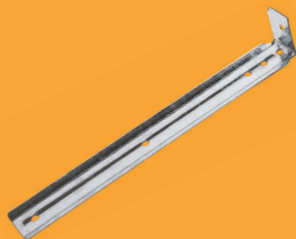
BW34

Multi-Function Batwing
Clip ¼"- 20 And 10-20
Thread #12 Wire To ¾" Rod



ANGLE4J

Angle Clip
With ¼" Hole And ¼"- 20
Threaded Eyelet



ACEXT

Angle Bracket Extension
Also Use For JHook Tree



ACT4TM

Nail With ¾" ¼"- 20
Threaded Male
Standoff Screw



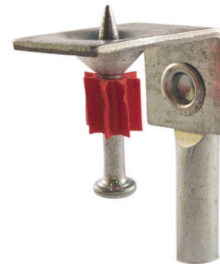
AF14

Hammer On ⅛" To ¼"
Angled Flange



ANGLE4T

¼"- 20 Eyelet Attached
To 90 Degree Angle Clip
With ¼" Hole



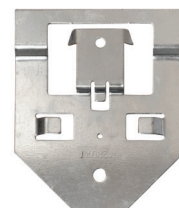
ACTUATED4T

Powder Actuated Nail
With ¼"- 20 Eyelet



512HD

24" Heavy Duty
T-Bar Mount
1½" Or 2 ⅛" Boxes



512HDEXT

Extension Bracket
For Heavy Duty
T-Bar Hanger Height 3 ⅝"